



NORWEGIAN CRUISE LINE™

FREESTYLE CRUISING™



CRUISE WITH



CLASSIC ROCK FROM THE 60'S & 70'S

Join **CLUB PHRED** on a 7 night cruise from Philadelphia to Bermuda aboard the **NORWEGIAN CROWN**. The **NORWEGIAN CROWN** is 34,242 gross tons and carries 1078 passengers. Swimming pool, 2 hot tubs, casino, fitness center, spa and beauty salon.

FREESTYLE CRUISING

Club Phred will have several performances aboard the ship!

Departs April 30th, 2006 - Returns May 7th, 2006

To make reservations, or for questions, please contact:

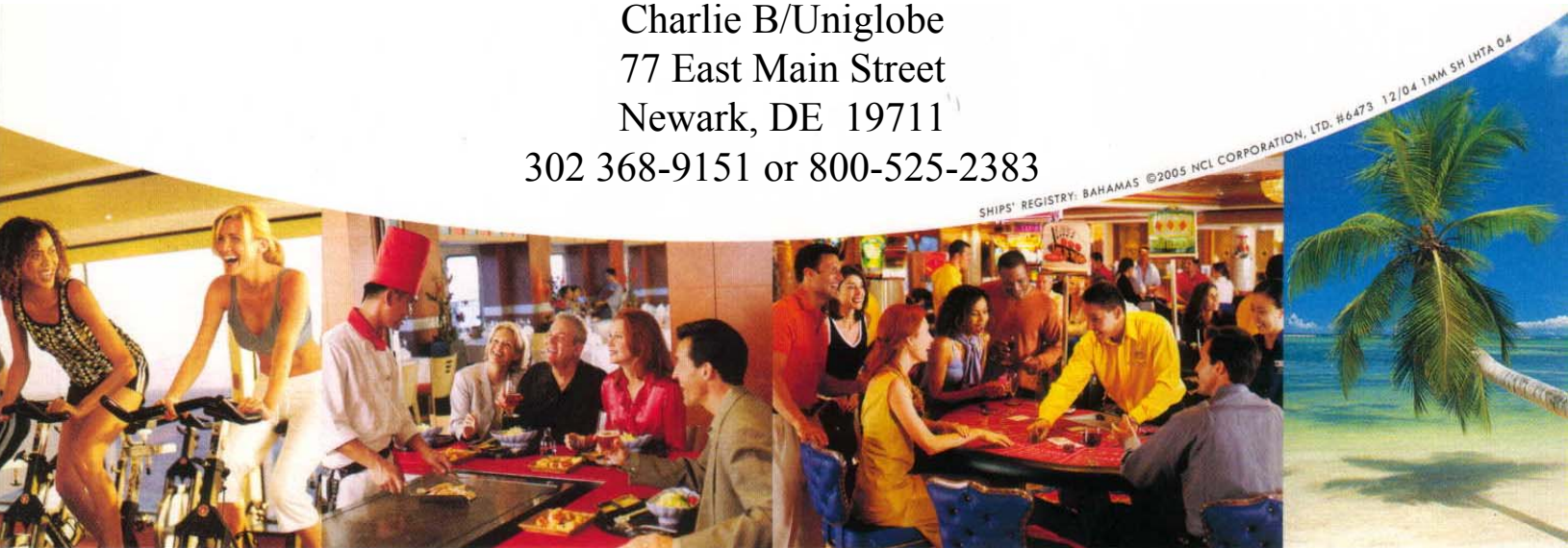
Donna Friswell

Charlie B/Uniglobe

77 East Main Street

Newark, DE 19711

302 368-9151 or 800-525-2383



SHIPS' REGISTRY: BAHAMAS ©2005 NCL CORPORATION, LTD. #6473 12/04 IMM SH LHTA 04

CLUB PHRED CRUISE

Inside cabins at \$1089 per person, based on double occupancy

Outside cabins at \$1189 per person, based on double occupancy

Cruise rate includes \$100 tax deductible contribution to Christina Education Enrichment Fund (CEEF)

Rate includes: transportation, accommodations, port charges, government fees, all shipboard meals and activities.

Not included: Beverages, items of a personal nature, gratuities (\$70 per person, payable on board)

Cancellation insurance optional and recommended. Rates available upon request and are based on the age of the traveler.

***PASSPORT is required for travel to Bermuda (effective 31Dec05)**

Deposit \$250 per person required at time of booking.

2nd deposit of \$500 per person due by 15 Dec 2005

Final payment due by 01 Feb 2006

(Cancellation penalty \$50 per person after deposit; 100% after 01 Feb 2006)

Terms and Conditions

Because of its status as an agent, and because it maintains no control over the personnel, equipment or operations of the tour/cruise/hotel operator or of any travel service suppliers, Uniglobe/Red Carpet Travel/Charlie B Travels Inc can assume no responsibility for and cannot be held liable for any personal injury, property damage, or other loss, accident, delay, inconvenience, or irregularity which may be occasioned either by reason of (1) any wrongful or negligent acts or omissions on the part of the tour/cruise/hotel operator or any of the suppliers, (2) any wrongful, negligent or unauthorized acts or omissions on the part of any employee of the tour/cruise/hotel operator or any of the suppliers, (3) any defect in or failure of any vehicle, equipment or instrument owned, operated or otherwise used by the tour/cruise/hotel operator or by any of the suppliers, or (4) any wrongful or negligent acts or omissions on the part of any other party not under the control, direct or otherwise, of Uniglobe/Red Carpet Travel/Charlie B Travels, Inc.